

REAL SPIN MS'

MinebeaMitsumi
Passion to Create Value through Difference

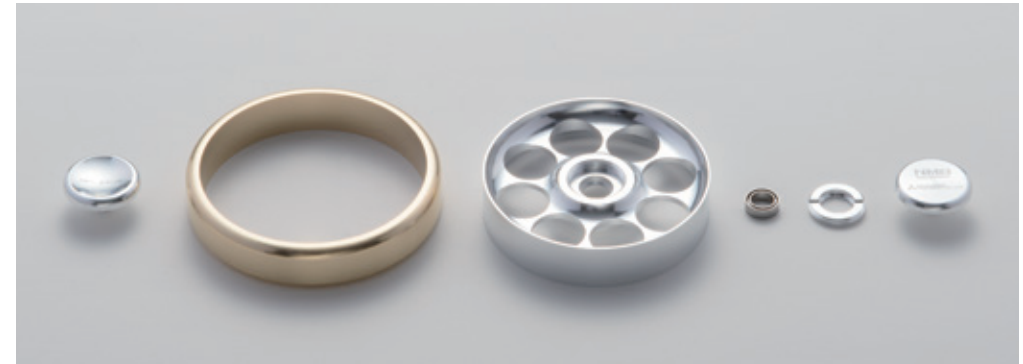


 **MITSUBISHI
PRECISION CO., LTD.**

REAL SPIN MS'

The secret to supporting extreme spinning

Extreme spinning is the result of a combination of ultra precision and space quality (Micro and Macro)



Rallying the full power of ultra precision machining!

Bearings

Our spinner bearings are specially designed in consideration of the longer spinning durations of spinners and utilize ceramic balls with low contact friction.

Wheel/Ring

Our spinner wheels/rings are made using the rod end bearing manufacturing technology designed for aircraft. These are also made using the strongest aluminum alloy materials from among the A7000 series to ensure the thinnest and lightest design.

Holder/Nut

The holders/nuts achieve the highest level of surface finish cutting by applying technologies acquired through producing medical and precision equipment.

Hold space quality design and assembly in your hand!

Design

To ensure they continue smoothly spinning on and on, our spinner designs are invested with the know-how acquired through space equipment design and manufacture, including angular momentum maximization and bearing torque loss reduction.

Assembly

Our spinners are assembled utilizing process technologies, such as precision fitting technology to assemble the parts at high precision and precision cleaning to draw out the characteristics of the bearings.

Clean

Our spinners are assembled and tested in the clean rooms used to produce space equipment(*1).

*1 Clean rooms are ISO Class 5 (Class 100). An extremely clean environment in which there are fewer than 100 particles larger than 0.5 microns in size per 1 cubic foot.



NMB is the registered trademark for MinebeaMitsumi ball bearings.



MinebeaMitsumi

Passion to Create Value through Difference

MinebeaMitsumi Inc.

Established in 1951, MinebeaMitsumi is Japan's first manufacturer of miniature ball bearings. Having balanced ultra precision machining technology with mass-production, we now boast the top share globally for miniature and small-diameter bearings with an external diameter of 22 mm or less.



©Mitsubishi Electric Corporation



©JAXA



Mitsubishi Precision Co., Ltd.

With more than 50 years of history involved in space exploration, Mitsubishi Precision is a pioneer in space equipment manufacturing. In addition to developing and manufacturing artificial satellites and rocket-borne equipment, we continue to develop various businesses, including aircraft-borne electronic devices, simulators, and parking garage systems.



JAPAN HANDSPINNER CLUB

【公式】日本ハンドスピナークラブ

Contact information

[Official] JAPAN HANDSPINNER

CLUB (part of caseoclock)

Tel: 81-3-5428-5455

Weekdays: 10:00 - 17:00

URL: <http://handspinner.club/ms/>Email:

info@handspinner.club

Manufacturer

MinebeaMitsumi Inc.

(Bearings, parts machining)

Mitsubishi Precision Co., Ltd.

(Spinner design, assembly,

testing)
