

Initiatives for Preventing Global Warming

● Basic Approach

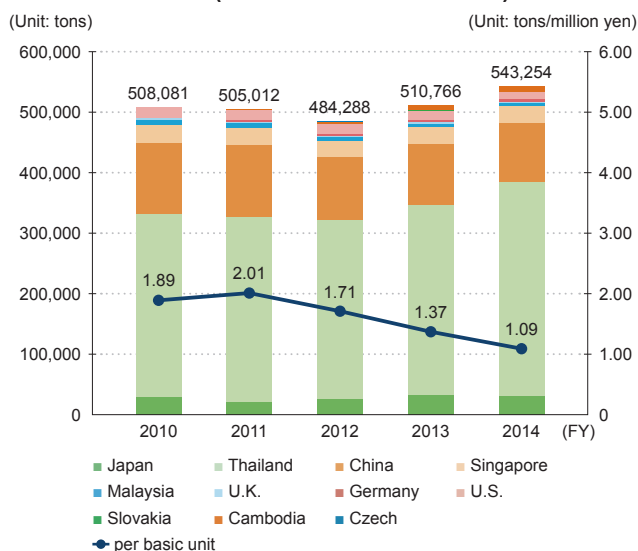
The Minebea Group recognizes that the international issue of global warming, along with the related issues of soaring energy prices and abnormal climatic conditions, pose a significant threat to the sustainability of its business activities.

In response, each office and plant in the Minebea Group is proactively promoting energy efficiency initiatives in order to combat global warming after having completed formulating the main measures for their sites. Additionally, our Energy Conservation Promotion Committee, which is made up of representatives of all our business units, promotes the sharing of knowledge and technologies accumulated from past activities along with case studies on exemplary energy-efficient initiatives. The sharing of this wisdom among the Group's business units is bolstering the entire Group's approach to global warming prevention.

● Results of FY2014 Initiatives

The Minebea Group's emissions of CO₂ in FY2014 totaled 543,254 tons, 6% more than in FY2013. In terms of basic units of production, CO₂ emissions declined 20% over FY2013 to 1.09 tons per million yen of production. The reason for this decrease was highly energy-efficient manufacturing activities amid strong business growth, as well as efforts taken by plants around the world to reduce CO₂ emissions.

In FY2014, the Group's CO₂ emissions generated from logistics operations totaled 87,788 tons, an increase of 23% compared with FY2013.

● CO₂ Emissions (Total and Per Basic Unit)

● Initiatives in Office Spaces

Energy-efficiency Initiatives at Tokyo Head Office (Japan)

Our Tokyo Head Office relocated to a newly purchased office building in Tokyo in January 2013. In October 2013, the office began full-fledged ISO 14001 environmental management activities.

The energy-efficiency activities included both physical controls, such as changes to air conditioning operations along with turning off and dimming lights, to awareness-type activities such as encouraging employees to adopt cool business attire. As a result, the building was able to reduce its overall energy consumption by 7% compared with FY2013. While the office reduced electric power consumption in the use of air conditioning, the amount of city gas used to power hot and chilled water generators during the summer months increased slightly. Altogether, the office reduced CO₂ emissions by 5% in FY2014 compared with FY2013 when converting both electricity and gas consumption.

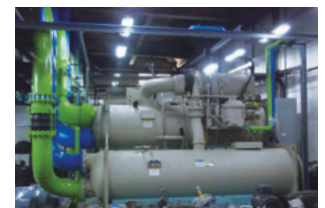
● Initiatives at Work Sites

Upgrading to High-efficiency Equipment (Thailand)

When upgrading plant equipment, the Minebea Group selects and installs high-efficiency type equipment to promote environmentally conscious manufacturing activities. In FY2014, NMB-Minebea Thailand upgraded two chillers at its Bang Pa-in Plant. The upgrade has reduced electric power consumption by approximately 20%.



Chillers installed at Bang Pa-in Plant



● Future Issues and Goals

The Minebea Group will continue to advance its measures to prevent global warming. As a medium-term goal, by FY2015 we plan to reduce CO₂ emissions per basic unit of production by 5% compared with FY2010, or 1% annually.

In terms of long-term goals for 2020 and 2030, we will monitor the Intergovernmental Panel on Climate Change (IPCC) and policies in countries around the world in formulating our initiatives.