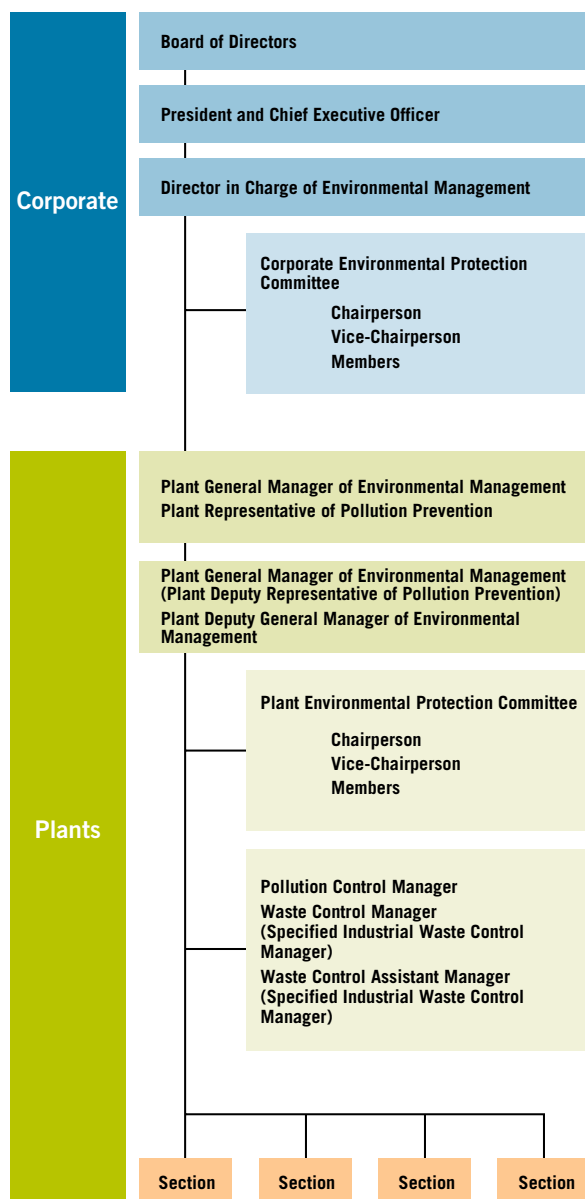


Minebea has always recognized environmental protection as a top management priority and has taken an active role in addressing related issues. The Corporate Environmental Protection Committee, under the guidance of the director in charge of environmental preservation, currently spearheads environmental protection efforts for the entire Minebea Group. Actual activities are overseen by individual plant environmental protection committees, which proceed in accordance with decisions made by the Corporate Environmental Protection Committee, pertinent legislation and regulations and regional and municipal directives.

Environmental Management System



Environmental management meeting (Thailand)



Production facility inspection (Singapore)