

# Corporate Data

## Corporate Information (As of March 31, 2024)

### MinebeaMitsumi Tokyo X Tech Garden

1-9-3, Higashi-shimbashi, Minato-ku, Tokyo, 105-0021, Japan  
Tel: 81-3-6758-6711  
Fax: 81-3-4511-3943  
<https://www.minebeamitsumi.com/english/>

### Registered Head Office

4106-73, Oaza Miyota, Miyota-machi, Kitasaku-gun, Nagano 389-0293, Japan  
Tel: 81-267-32-2200  
Fax: 81-267-31-1350

### Established

July 16, 1951

### Independent Auditors

KPMG AZSA LLC

## Overview of Shares (As of March 31, 2024)

### Common Stock

Authorized: 1,000,000,000 shares  
Issued: 427,080,606 shares  
Capital: ¥68,259 million  
Shares per unit: 100

### Common Stock Listings

Prime Market of the Tokyo  
Stock Exchange  
Security Code: 6479

### Agent to Manage Shareholders' Registry

Sumitomo Mitsui Trust Bank, Limited  
Tel: 0120-782-031 (toll-free, available only in Japan)  
URL: <https://www.smtb.jp/personal/procedure/agency>

## Overview of Shareholders

### Classification by Ownership of Shares

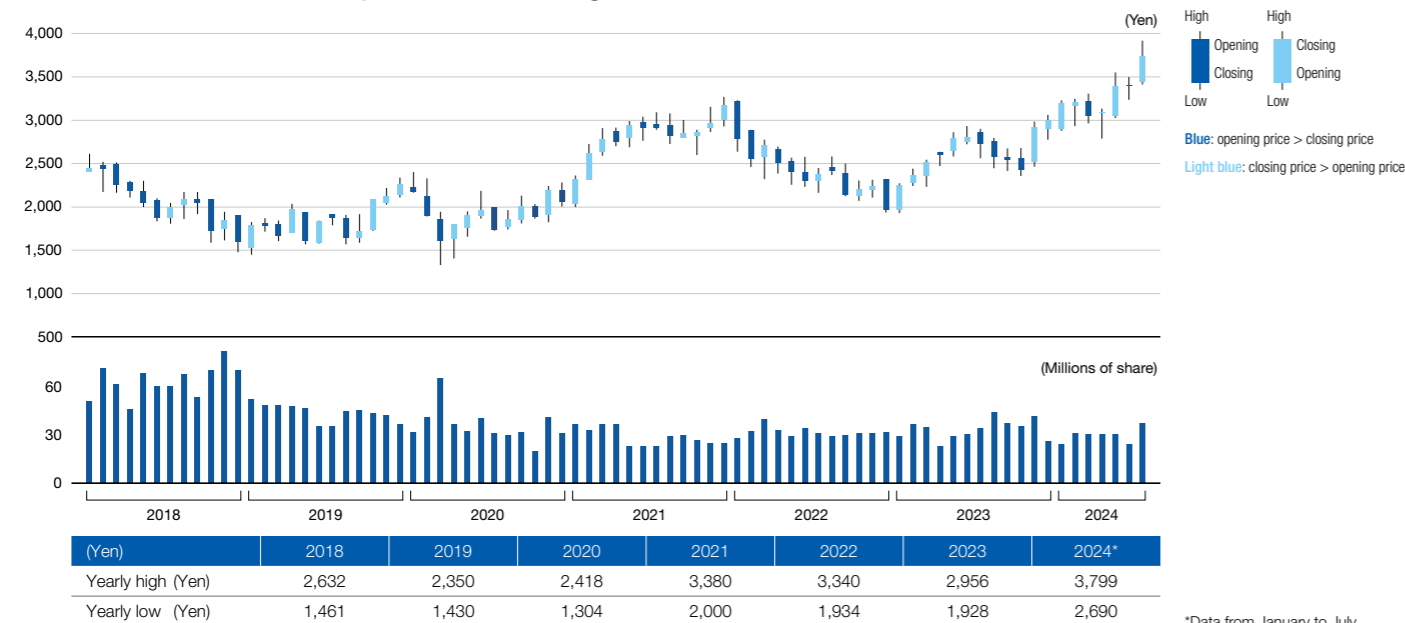
	Number of shareholders	Percentage of shares outstanding (%)	Number of shares held (Hundreds of shares)	Percentage of shares outstanding (%)
Japanese financial institutions	96	0.4	1,756,215	41.1
Overseas institutions	694	2.6	1,679,628	39.3
Other Japanese corporations	284	1.1	312,087	7.3
Individuals and others	19,077	71.9	518,650	12.1
Subtotal	20,151	75.9	4,266,580	99.9
Others	6,389	24.1	4,226	0.1
Total	26,540	100.0	4,270,806	100.0

### Top Ten Major Shareholders

	Number of shares (Thousands of shares)	Shareholding ratio (%)
The Master Trust Bank of Japan, Ltd. (Trust account)	68,079	16.83
Custody Bank of Japan, Ltd. (Trust account)	30,012	7.41
Takahashi Industrial and Economic Research Foundation	15,447	3.81
Sumitomo Mitsui Trust Bank, Limited	15,413	3.81
BNYM AS AGT/CLTS NON TREATY JASDEC	10,712	2.64
Sumitomo Mitsui Banking Corporation	10,223	2.52
MUFG Bank, Ltd.	10,181	2.51
KEIAISHA Co., Ltd.	10,100	2.49
SSBTC CLIENT OMNIBUS ACCOUNT	8,604	2.12
STATE STREET BANK CLIENT OMNIBUS OM04	6,929	1.71

Notes: 1. The Company holds 22,582,371 shares of treasury stock, and is excluded from the major shareholders list above.  
2. The number of shares owned by the trust account, which was opened for the Board Benefit Trust is not included in the above number of treasury stock because they are not owned by the Company.  
The number of shares owned by the given trust account is 118,898 shares.  
3. Shareholding ratio is calculated exclusive of treasury stock.  
The number of shares and shareholding ratio are rounded down to the nearest unit of presentation.

## Stock Prices on the Tokyo Stock Exchange



\*Data from January to July

## Status of Dialogue with Shareholders

Items	Initiatives	Fiscal year ended March 2024	Number of events
Main respondents in dialogue with shareholders	Representative Director, Chairman CEO, Director, President COO & CFO, senior management, and the Corporate Communications/Investor Relations Office (dedicated office for dialogue with shareholders), and undertakes this task in cooperation with related departments.	Financial results briefing	4
Shareholders with whom dialogue was conducted	Domestic and foreign analysts and institutional investors	Individual meetings	361
Main themes of dialogue and shareholder items of interest	Medium- to long-term management strategies, growth strategies, financial strategies, strategies by business, ESG initiatives, etc.	Conference at securities company	42
Status of feedback of shareholder opinions and concerns to management and Directors	Shareholder opinions, etc. obtained through dialogue activities are fed back to management and related divisions as necessary through reports at Board of Directors meetings and the distribution of reports, etc., in order to share and utilize the information.	Engagement with institutional investors	15
Items incorporated based on feedback	Enhancing disclosure of financial and non-financial information (e.g., segment name changes, etc.)	Overseas IR roadshows	42
Issues under consideration based on feedback	Enhancement of KPIs for non-financial data, etc.	Total	460

## Status of MinebeaMitsumi as a Constituent of Certain Indexes (As of August 2024)



FTSE Blossom  
Japan Sector  
Relative Index

2024 CONSTITUENT MSCI JAPAN  
EMPOWERING WOMEN INDEX (WIN)

2024 CONSTITUENT MSCI NIHON  
ESG SELECT LEADERS INDEX



\*The inclusion of MinebeaMitsumi in any MSCI index, and the use of MSCI logos, trademarks, service marks or index names herein, do not constitute a sponsorship, endorsement or promotion of MinebeaMitsumi by MSCI or any of its affiliates. The MSCI indexes are the exclusive property of MSCI. MSCI and the MSCI index names and logos are trademarks or service marks of MSCI or its affiliates.

## Summary of Information Available on the MinebeaMitsumi Group Website

On the MinebeaMitsumi Group website we make available on an ongoing basis more detailed information and reports on the most recent activity that could not be included in these printed materials. A variety of other corporate information is also available, which we recommend you view at your leisure.

- Corporate information website — <https://www.minebeamitsumi.com/english/>
- Information for investors — <https://www.minebeamitsumi.com/english/corp/investors/>
- Sustainability information — <https://www.minebeamitsumi.com/english/csr/>
- Corporate governance information — <https://www.minebeamitsumi.com/english/corp/company/aboutus/governance/>

### Disclaimer Regarding Future Projections

In this report, all statements that are not historical facts are future projections made based on certain assumptions and our management's judgment drawn from currently available information. Accordingly, when evaluating our performance or value as a going concern, these projections should not be relied on entirely.

Please note that actual performance may vary significantly from any particular projection, owing to various factors, including: (i) changes in economic indicators surrounding us, or in demand trends; (ii) fluctuation of foreign exchange rates or interest rates; and (iii) our ability to continue R&D, manufacturing, and marketing in a timely manner in the electronics business sector, where technological innovations are rapid and new products are launched continuously. Please note, however, this is not a complete list of the factors affecting actual performance.

\*Information contained herein is the exclusive property of MinebeaMitsumi Inc., and may not be reproduced, modified, or transmitted in any form or by any means for whatever purpose without MinebeaMitsumi's prior written permission.

Note: "Electro Mechanics Solutions" is a registered trademark in Japan of MinebeaMitsumi Inc. Its registration No. is 5322479.

"QCODESS" is a registered trademark in Japan of MinebeaMitsumi Inc. Its registration No. is 6538154.

"Bed Sensor System" is a registered trademark in Japan of MinebeaMitsumi Inc. Its registration No. is 6152256.

"MINEGE" is a registered trademark in Japan of MinebeaMitsumi Inc. Its registration No. is 6069512.