

Corporate Data

Corporate Information (As of August 2018)

Tokyo Headquarters

3-9-6, Mita, Minato-ku, Tokyo 108-8330, Japan
 Tel : 81-3-6758-6711
 Fax : 81-3-6758-6700
 URL: <http://www.minebeamitsumi.com/english/>

Registered Head Office

4106-73, Oaza Miyota, Miyota-machi, Kitasaku-gun, Nagano 389-0293, Japan
 Tel : 81-267-32-2200
 Fax : 81-267-31-1350

Established

July 16, 1951

Independent Auditors

KPMG AZSA LLC

Overview of shares (As of March 31, 2018)

Common Stock

Authorized: 1,000,000,000 shares
 Issued: 427,080,606 shares
 Capital: ¥68,258 million
 Shares per unit: 100

Common Stock Listings

Listed on the first section of the Tokyo and Nagoya Stock Exchanges

American Depositary Receipts

Ratio (ADR : ORD) : 1 : 2
 Exchange: Over-the-Counter (OTC)
 Symbol: MNBEY
 CUSIP: 602725301
 Depository: The Bank of New York Mellon
 101 Barclay Street, New York, NY 10286, U.S.A.
 Tel: 1-201-680-6825
 U.S. toll-free: 888-269-2377 (888-BNY-ADRS)
 URL: <http://www.adrbnymellon.com/>

Agent to Manage Shareholders' Registry

Sumitomo Mitsui Trust Bank, Limited
 Tel : 0120-782-031
 (toll-free, available only in Japan)
 URL: <http://www.smtb.jp/personal/agency/index.html>

Major Shareholders

Classification by Ownership of Shares

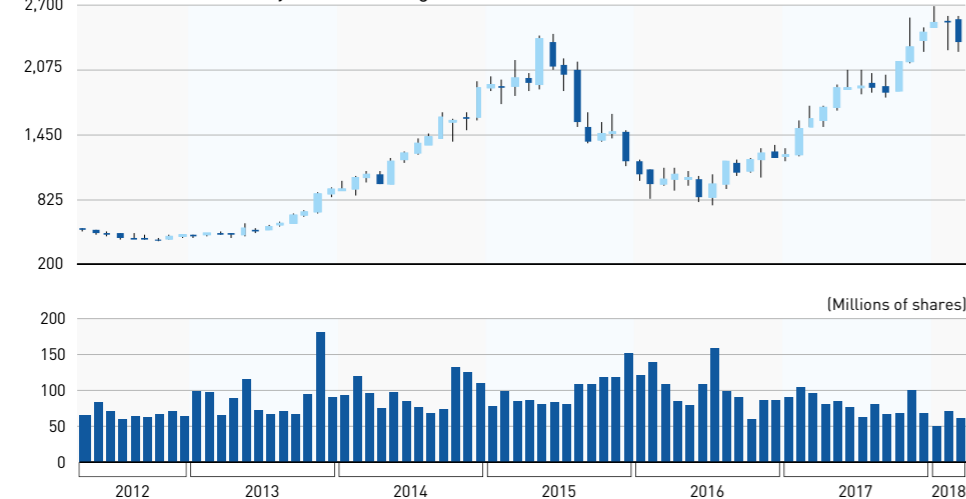
	Number of shareholders	Percentage of shareholders (%)	Number of shares held (Hundreds of shares)	Percentage of shares outstanding (%)
Japanese financial institutions	141	0.4	1,805,312	42.3
Overseas institutions	675	1.9	1,678,821	39.3
Other Japanese corporations	344	0.9	313,970	7.4
Individuals and others	29,310	81.1	466,299	10.9
Subtotal	30,470	84.3	4,264,402	99.9
Others	5,654	15.7	6,404	0.1
Total	36,124	100.0	4,270,806	100.0

Top Ten Major Shareholders

	Number of shares (Thousands of shares)	Shareholding ratio (%)
The Master Trust Bank of Japan, Ltd. (Trust account)	35,013	8.31
Japan Trustee Services Bank, Ltd. (Trust account)	22,732	5.39
Takahashi Industrial and Economic Research Foundation	15,447	3.67
Sumitomo Mitsui Trust Bank, Limited	15,413	3.66
Japan Trustee Services Bank, Ltd. (Trust account 4)	14,174	3.36
Sumitomo Mitsui Banking Corporation	10,223	2.43
The Bank of Tokyo-Mitsubishi UFJ, Ltd.	10,181	2.42
KEIAISHA Co., Ltd.	10,100	2.40
THE CHASE MANHATTAN BANK 385036	8,682	2.06
Japan Trustee Services Bank, Ltd. (Trust account 5)	7,093	1.68

Notes: 1. Shareholding ratio is calculated exclusive of treasury stock (5,655,295 shares) .
 2. On April 1, 2018, The Bank of Tokyo-Mitsubishi UFJ, Ltd. changed its trade name to MUFG Bank, Ltd.

Stock Prices on the Tokyo Stock Exchange



High Opening Closing Low
 High Opening Closing Low
 Blue: opening price > closing price
 Light blue: closing price > opening price

Status of MinebeaMitsumi as a constituent of certain indexes (As of August 2018)

MSCI Japan Empowering Women Index (WIN)

This index is built from companies selected for their superior gender diversity within their sector, based on gender diversity scores calculated by MSCI. MinebeaMitsumi has been selected as one of the constituents of the MSCI Japan Empowering Women Index (WIN), which is composed of companies that are promoting the advancement of women.



Summary of information available on the MinebeaMitsumi Group website

On the MinebeaMitsumi Group website we make available on an ongoing basis more detailed information, and reports on the most recent activity, that could not be included in these printed materials. A variety of other corporate information is also available, which we recommend you view at your leisure.

Corporate information website — <http://www.minebeamitsumi.com/english/>

Information for investors — <http://www.minebeamitsumi.com/english/corp/investors/>

CSR/Environmental information — <http://www.minebeamitsumi.com/english/corp/environment/>

Corporate governance information — <http://www.minebeamitsumi.com/english/corp/investors/management/governance/>

For further information, please contact us listed below.

Product purchasing and catalog requests:

Sales Headquarters
 Tel: 81-3-6758-6746
 Fax: 81-3-6758-6760

CSR information:

CSR Promotion Office
 Tel: 81-3-6758-6724
 Fax: 81-3-6758-6700

Other inquiries:

Corporate Communications Office
 Tel: 81-3-6758-6703
 Fax: 81-3-6758-6718

IR information:

Investor Relations Office
 Tel: 81-3-6758-6720
 Fax: 81-3-6758-6710

Employment opportunities:

Human Resources Development Dep.
 Tel: 81-3-6758-6712
 Fax: 81-3-6758-6700

Environmental Consideration in Printing



Printed on paper made with wood from forest thinning. "Morino Chonai-Kai" (Forest Neighborhood Association)—Supporting sound forest management.



The MinebeaMitsumi Group supports efforts by Japan's Forestry Agency to reduce CO₂ emissions through the use of domestic forestry products. This report was produced using paper made from Japanese wood products. Active use of such products helps promote the maintenance of Japan's forests and contributes to raising the amount of CO₂ that these forests can absorb.

Disclaimer Regarding Future Projections

In this report, all statements that are not historical facts are future projections made based on certain assumptions and our management's judgement drawn from currently available information. Accordingly, when evaluating our performance or value as a going concern, these projections should not be relied on entirely.

Please note that actual performance may vary significantly from any particular projection, owing to various factors, including: (i) changes in economic indicators surrounding us, or in demand trends; (ii) fluctuation of foreign exchange rates or interest rates; and (iii) our ability to continue R&D, manufacturing and marketing in a timely manner in the electronics business sector, where technological innovations are rapid and new products are launched continuously.

Please note, however, this is not a complete list of the factors affecting actual performance.

* Information contained herein is the exclusive property of MINEBEA MITSUMI Inc., and may not be reproduced, modified or transmitted in any form or by any means for whatever purpose without MinebeaMitsumi's prior written permission.

Note: "Electro Mechanics Solutions" is a registered trademark in Japan of MINEBEA MITSUMI Inc. Its registration No. is 5322479.