

## Corporate Data

### MINEBEA MITSUMI Inc.

#### Corporate Information (As of June 2017)

<b>Tokyo Headquarters</b> 3-9-6, Mita, Minato-ku, Tokyo 108-8330, Japan Tel: 81-3-6758-6711 Fax: 81-3-6758-6700 URL: <a href="http://www.minebeamitsumi.com/english/">http://www.minebeamitsumi.com/english/</a>	<b>Registered Head Office</b> 4106-73, Oaza Miyota, Miyota-machi, Kitasaku-gun, Nagano 389-0293, Japan Tel: 81-267-32-2200 Fax: 81-267-31-1350	<b>Established</b> July 16, 1951	<b>Independent Auditors</b> KPMG AZSA LLC
---	---	-------------------------------------	--

#### Investor Information (As of March 31, 2017)

##### Common Stock

Authorized: 1,000,000,000 shares  
Issued: 427,080,606 shares  
Capital: ¥68,259 million  
Shares per unit: 100

\* The number of shares per share unit changed from 1,000 shares to 100 shares from May 1, 2016.

##### Common Stock Listings

Tokyo and Nagoya

##### American Depository Receipts

Ratio (ADR : ORD): 1 : 2

Exchange: Over-the-Counter (OTC)

Symbol: MNBEY

CUSIP: 602725301

Depository: The Bank of New York Mellon

101 Barclay Street, New York,

NY 10286, U.S.A.

Tel: 1-201-680-6825

U.S. toll-free: 888-269-2377

(888-BNY-ADRS)

URL: <http://www.adrbnymellon.com/>

##### Agent to Manage Shareholders' Registry

Sumitomo Mitsui Trust Bank, Limited

Tel: 81-120-782-031

<http://www.smtb.jp/personal/agency/index.html>

##### Major Shareholders

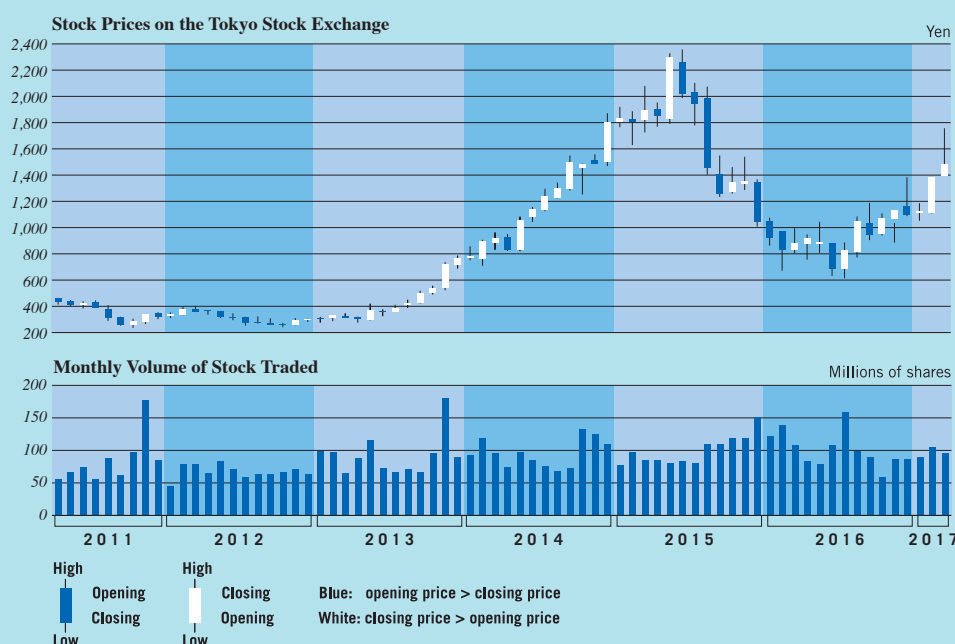
###### Classification by Ownership of Shares

	Number of shareholders	Percentage of shareholders (%)	Number of shares held (Hundred shares)	Percentage of shares outstanding (%)
Japanese financial institutions	118	0.3	1,783,726	41.8
Overseas institutions	593	1.6	1,596,579	37.4
Other Japanese corporations	406	1.1	317,223	7.4
Individuals and others	30,213	80.8	564,701	13.2
Subtotal	31,330	83.8	4,262,229	99.8
Others	6,075	16.2	8,577	0.2
Total	37,405	100.0	4,270,806	100.0

###### Top Ten Major Shareholders

	Number of shares (Shares)	Shareholding ratio (%)
The Master Trust Bank of Japan, Ltd. (Trust Account)	31,045,900	7.29
Japan Trustee Services Bank, Ltd. (Trust account)	22,885,200	5.37
Takahashi Industrial and Economic Research Foundation	15,447,330	3.63
Sumitomo Mitsui Trust Bank, Limited	15,413,900	3.62
Japan Trustee Services Bank, Ltd. (Trust account 4)	13,860,300	3.25
Sumitomo Mitsui Banking Corporation	10,223,597	2.40
The Bank of Tokyo-Mitsubishi UFJ, Ltd.	10,181,739	2.39
KEIAISHA Co., Ltd.	10,100,000	2.37
THE CHASE MANHATTAN BANK 385036	6,944,305	1.63
Japan Trustee Services Bank, Ltd. (Trust account 5)	6,683,300	1.57

Notes: Shareholding ratio is calculated exclusive of treasury stock (1,005,595 shares).



#### For further information please contact:

Investor Relations Office  
MINEBEA MITSUMI Inc.  
Tel: 81-3-6758-6720  
Fax: 81-3-6758-6710