

## Corporate Data

### Minebea Co., Ltd.

#### Corporate Information (As of June 2016)

<b>Tokyo Headquarters</b> 3-9-6, Mita, Minato-ku, Tokyo 108-8330, Japan Tel: 81-3-6758-6711 Fax: 81-3-6758-6700 URL: <a href="http://www.minebea.co.jp/english/">http://www.minebea.co.jp/english/</a>	<b>Registered Head Office</b> 4106-73, Oaza Miyota, Miyota-machi, Kitasaku-gun, Nagano 389-0293, Japan Tel: 81-267-32-2200 Fax: 81-267-31-1350	<b>Established</b> July 16, 1951	<b>Independent Auditors</b> KPMG AZSA LLC
---	---	-------------------------------------	--

#### Investor Information (As of March 31, 2016)

##### Common Stock

Authorized: 1,000,000,000 shares  
 Issued: 399,167,695 shares  
 Capital: ¥68,259 million  
 Shares per unit: 1,000

\* The number of shares per share unit changed from 1,000 shares to 100 shares from May 1, 2016.

##### Common Stock Listings

Tokyo and Nagoya

##### American Depository Receipts

Ratio (ADR : ORD): 1 : 2

Exchange: Over-the-Counter (OTC)

Symbol: MNBEY

CUSIP: 602725301

Depository: The Bank of New York Mellon

101 Barclay Street, New York,

NY 10286, U.S.A.

Tel: 1-201-680-6825

U.S. toll-free: 888-269-2377

(888-BNY-ADRS)

URL: <http://www.adrbnymellon.com/>

##### Agent to Manage Shareholders' Registry

Sumitomo Mitsui Trust Bank, Limited

Tel: 81-120-782-031

<http://www.smtb.jp/personal/agency/index.html>

##### Major Shareholders

###### Classification by Ownership of Shares

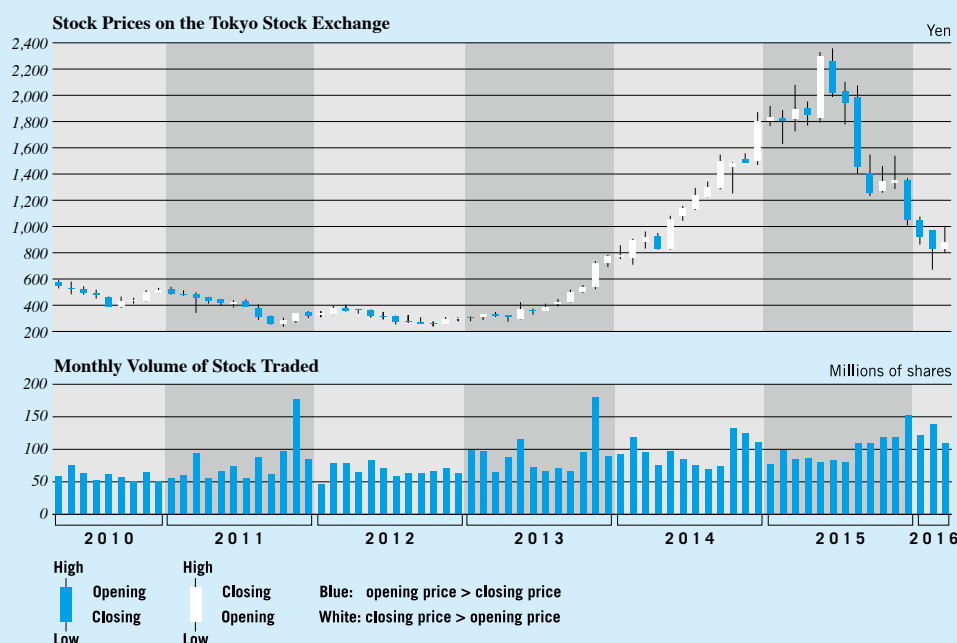
	Number of shareholders	Percentage of shareholders (%)	Number of shares held (Thousand shares)	Percentage of shares outstanding (%)
Japanese financial institutions	155	0.6	183,502	46.0
Overseas institutions	475	1.9	96,632	24.2
Other Japanese corporations	367	1.5	32,960	8.2
Individuals and others	21,106	86.6	85,450	21.4
Subtotal	22,103	90.6	398,544	99.8
Others	2,282	9.4	623	0.2
Total	24,385	100.0	399,167	100.0

##### Top Ten Major Shareholders

	Number of shares (Shares)	Shareholding ratio (%)
The Master Trust Bank of Japan, Ltd. (Trust Account)	23,649,000	6.25
Japan Trustee Services Bank, Ltd. (Trust account)	18,677,000	4.94
Takahashi Industrial and Economic Research Foundation	15,447,330	4.09
Sumitomo Mitsui Trust Bank, Limited	15,349,000	4.06
Japan Trustee Services Bank, Ltd. (Trust account 4)	13,623,000	3.60
Zenkyoren (National Mutual Insurance Federation of Agricultural Cooperatives)	10,380,000	2.74
KEIAISHA Co., Ltd.	10,100,000	2.67
The Bank of Tokyo-Mitsubishi UFJ, Ltd.	10,057,839	2.66
Sumitomo Mitsui Banking Corporation	10,000,475	2.64
The Dai-ichi Life Insurance Company, Limited	5,062,333	1.34

Notes: 1. The Company holds 21,021,093 shares of treasury stock, which are excluded from the major shareholders.

2. Shareholding ratio is calculated exclusive of treasury stock.



#### For further information please contact:

Investor Relations Office  
 Minebea Co., Ltd.  
 Tel: 81-3-6758-6720  
 Fax: 81-3-6758-6710