

## Corporate Data

### Minebea Co., Ltd.

#### Corporate Information (As of June 2015)

Tokyo Head Office	Registered Headquarters	Established	Independent Auditor
3-9-6, Mita, Minato-ku, Tokyo 108-8330, Japan Tel: 81-3-6758-6711 Fax: 81-3-6758-6700 URL: <a href="http://www.minebea.co.jp/english/">http://www.minebea.co.jp/english/</a>	4106-73, Oaza Miyota, Miyota-machi, Kitasaku-gun, Nagano 389-0293, Japan Tel: 81-267-32-2200 Fax: 81-267-31-1350	July 16, 1951	KPMG AZSA LLC

#### Investor Information (As of March 31, 2015)

##### Common Stock

Authorized: 1,000,000,000 shares  
 Issued: 399,167,695 shares  
 Capital: ¥68,259 million  
 Shares per unit: 1,000

##### Common Stock Listings

Tokyo and Nagoya

##### American Depositary Receipts

Ratio (ADR : ORD): 1 : 2

Exchange: Over-the-Counter (OTC)

Symbol: MNBEY

CUSIP: 602725301

Depository: The Bank of New York Mellon

101 Barclay Street, 22nd floor,

New York, NY 10286, U.S.A.

Tel: 1-201-680-6825

U.S. toll-free: 888-269-2377

(888-BNY-ADRS)

URL: <http://www.adrbnymellon.com/>

##### Agent to Manage Shareholders' Registry

Sumitomo Mitsui Trust Bank, Limited

Tel: 81-120-176-417

<http://www.smtb.jp/personal/agency/index.html>

##### Major Shareholders

###### Classification by Ownership of Shares

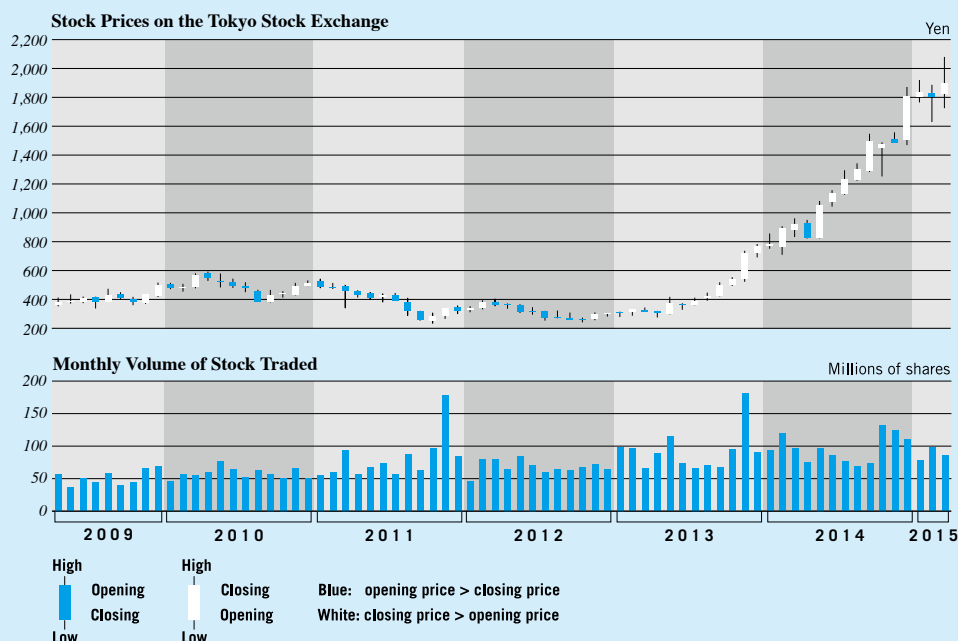
	Number of shareholders	Percentage of shareholders (%)	Number of shares held (Thousand shares)	Percentage of shares outstanding (%)
Japanese financial institutions	131	0.9	178,710	44.8
Overseas institutions	502	3.4	133,882	33.6
Other Japanese corporations	238	1.6	31,201	7.8
Individuals and others	11,917	80.6	54,806	13.7
Subtotal	12,788	86.5	398,599	99.9
Others	1,994	13.5	568	0.1
Total	14,782	100.0	399,167	100.0

##### Top Ten Major Shareholders

	Number of shares (Shares)	Shareholding ratio (%)
The Master Trust Bank of Japan, Ltd. (Trust Account)	28,879,000	7.64
Japan Trustee Services Bank, Ltd. (Trust account)	20,850,000	5.51
Takahashi Industrial and Economic Research Foundation	15,447,330	4.08
Sumitomo Mitsui Trust Bank, Limited	15,349,000	4.06
Japan Trustee Services Bank, Ltd. (Trust account 4)	13,350,000	3.53
Zenkyoren (National Mutual Insurance Federation of Agricultural Cooperatives)	10,930,000	2.89
KEIAISHA Co., Ltd.	10,100,000	2.67
The Bank of Tokyo-Mitsubishi UFJ, Ltd.	10,057,839	2.66
Sumitomo Mitsui Banking Corporation	10,000,475	2.64
JP MORGAN CHASE BANK 380634 (Standing proxy: Mizuho Bank, Ltd. Settlement & Clearing Services Division)	8,025,599	2.12

Notes: 1. The Company holds 21,014,915 shares of treasury stock, which are excluded from the major shareholders.

2. Shareholding ratio is calculated exclusive of treasury stock.



#### For further information please contact:

Investor Relations Office  
 Minebea Co., Ltd.  
 Tel: 81-3-6758-6720  
 Fax: 81-3-6758-6710