

Corporate Data

Minebea Co., Ltd.

Corporate Information (As of June 2012)

Tokyo Head Office ARCO Tower, 19th Floor, 1-8-1, Shimo-Meguro, Meguro-ku, Tokyo 153-8662, Japan Tel: 81-3-5434-8611 Fax: 81-3-5434-8601 URL: http://www.minebea.co.jp/english/index.html	Registered Headquarters 4106-73, Oaza Miyota, Miyota-machi, Kitasaku-gun, Nagano 389-0293, Japan Tel: 81-267-32-2200 Fax: 81-267-31-1350	Established July 16, 1951	Independent Auditors KPMG AZSA LLC
---	--	-------------------------------------	--

Investor Information (As of March 31, 2012)

Common Stock

Authorized: 1,000,000,000 shares
 Issued: 399,167,695 shares
 Capital: ¥68,259 million
 Shares per unit: 1,000

Common Stock Listings

Tokyo, Osaka and Nagoya

American Depositary Receipts

Ratio (ADR : ORD): 1 : 2
 Exchange: Over-the-Counter (OTC)
 Symbol: MNBEY
 CUSIP: 602725301
 Depository: The Bank of New York Mellon
 101 Barclay Street, 22nd floor,
 New York, NY 10286, U.S.A.
 Tel: 1-201-680-6825
 U.S. toll-free: 888-269-2377
 (888-BNY-ADRS)
 URL: <http://www.adrbnymellon.com/>

Agent to Manage Shareholders' Registry

Sumitomo Mitsui Trust Bank, Limited
 Tel: 81-120-176-417
<http://www.smtb.jp/personal/agency/index.html>

Major Shareholders

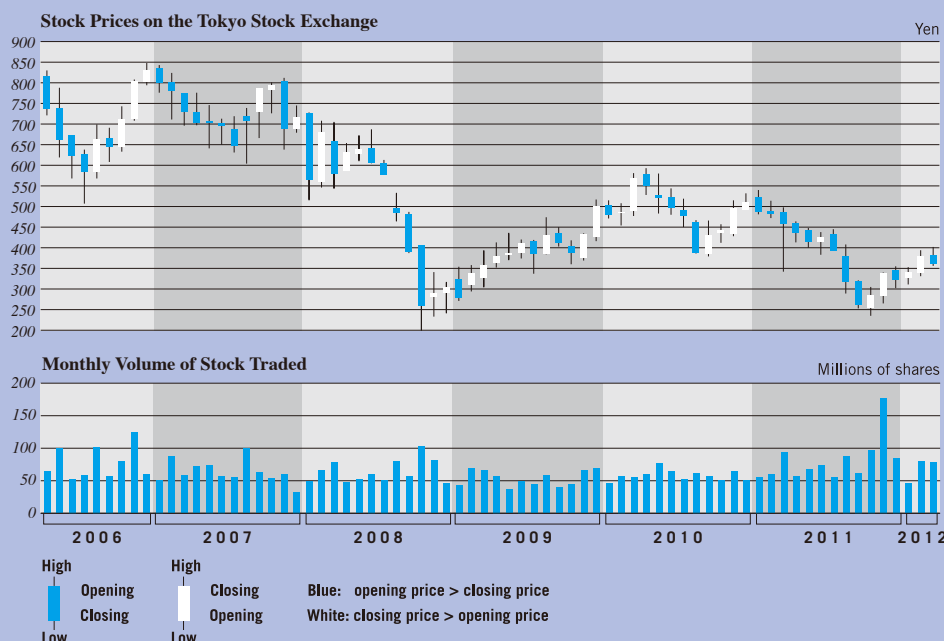
Classification by Ownership of Shares

	Number of shareholders	Percentage of shareholders	Number of shares held (Thousand shares)	Percentage of shares outstanding (%)
Japanese financial institutions	123	0.5	218,478	54.7
Overseas institutions	259	1.2	65,628	16.4
Other Japanese corporations	296	1.3	33,512	8.4
Individuals and others	19,857	88.2	80,910	20.3
Subtotal	20,535	91.2	398,528	99.8
Others	1,985	8.8	639	0.2
Total	22,520	100.0	399,167	100.0

Top Ten Major Shareholders

	Number of shares (Shares)	Shareholding ratio (%)
The Master Trust Bank of Japan, Ltd. (Trust Account)	33,486,000	8.84
Japan Trustee Services Bank, Ltd. (Trust Account)	32,569,000	8.60
Japan Trustee Services Bank, Ltd. (Trust Account 9)	19,370,000	5.11
The Sumitomo Trust & Banking Co., Ltd.	15,349,000	4.05
Keiaisha Co., Ltd.	15,000,000	3.96
Japan Trustee Services Bank, Ltd. (Trust Account 4)	14,355,000	3.79
Takahashi Industrial and Economic Research Foundation	12,347,330	3.26
The Bank of Tokyo-Mitsubishi UFJ, Ltd.	10,057,839	2.65
Sumitomo Mitsui Banking Corporation	10,000,475	2.64
Trust & Custody Services Bank, Ltd. (Securities Investment Trust Account)	7,628,000	2.01

Notes: 1. The Company holds 20,245,981 shares of treasury stock, which are excluded from the major shareholders.
 2. Shareholding ratio is calculated exclusive of treasury stock.
 3. Effective April 1, 2012, The Sumitomo Trust and Banking Co., Ltd. merged with The Chuo Mitsui Trust and Banking Company, Limited and Chuo Mitsui Asset Trust and Banking Company, Limited, and changed its name to Sumitomo Mitsui Trust Bank, Limited.



For further information please contact:

Investor Relations Office,
 Operation & Planning Div.
 Minebea Co., Ltd.
 Tel: 81-3-5434-8643
 Fax: 81-3-5434-8603