

Directors, Auditors and Executive Officers

Representative Director, President and Chief Executive Officer

Yoshihisa Kainuma

Director, Vice President Executive Officer

Koichi Dosho

Director, Senior Managing Executive Officer

Hiroharu Katogi

Officer in charge of Administration, Planning & Accounting Div. and Personnel & General Affairs Div.

Akihiro Hirao

Officer in charge of Engineering Support Div.
Chief of Special Device Manufacturing Headquarters
Officer in charge of Engineering at HDD Motor Manufacturing Headquarters

Eiichi Kobayashi

Chief of HDD Motor Manufacturing Headquarters

Hiroyuki Yajima

Chief of Machined Component Manufacturing Headquarters

Masayoshi Yamanaka

Officer in charge of Sales Division

Hiroataka Fujita

Chief of Elecyric Device & Component Manufacturing Headquarters

Outside Directors

Kohshi Murakami

Takashi Matsuoka

Standing Corporate Auditor

Akifumi Kamoi

Standing Outside Corporate Auditor

Kazuaki Tanahashi

Outside Corporate Auditors

Hiroataka Fujiwara

Hisayoshi Rikuna

Managing Executive Officers

Susumu Fujisawa

General Manager of Regional Affairs for China

Junichi Mochizuki

Deputy General Manager of Regional Affairs for China

Gary Yomantas

General Manager of Regional Affairs for the Americas
Head of NHBB/myonic Business Unit at Machined Component Manufacturing Headquarters

Daishiro Konomi

General Manager of Regional Affairs for Europe

Masayuki Imanaka

Officer in charge of Finance & Compliance Promotion Div.

Tamio Uchibori

Deputy Officer in charge of Administration, Planning Accounting Div. (In charge of Corporate Planning Department and Legal Department)

Jong Kwan Lim

Head of Moatech Business Unit at Global Motors Business Headquarters

Takashi Aiba

Officer in charge of Procurement & Logistics Div.

Shuji Uehara

Deputy Chief of HDD Motor Manufacturing Headquarters

Shigeru None

Deputy Officer in charge of Sales Div.

Hiroimi Yoda

Deputy Officer in charge of Administration, Planning Accounting Div. (In charge of Accounting Department and Business Administration Department)

Executive Officers

Kunio Shimba

Chief of Spindle Motor Product Sales Management of Sales Headquarters

Ryozo Iwaya

Head of Lighting Device Business Unit at Electronic Device & Component Manufacturing Headquarters

Hiroyuki Akatsu

Chief of Rotary Component Manufacturing Headquarters, Head of Information Motor Business Unit

Tatsuo Matsuda

Head of Yonago Plant; Head of Brushless Motor Business Unit of Minebea Motor Manufacturing Corporation

Koichi Takeshita

General Manager of Regional Affairs for South East Asia

Tetsuya Tsuruta

Head of Mechanical Assembly Business Unit at Machined Component Manufacturing Headquarters

Kazunori Sawayama

Officer in charge of Production Support Div.

Toru Narita

Head of Fan Motor Business Unit, Minebea Motor Manufacturing Corporation

Motoji Egawa

Deputy Officer in charge of Engineering Support Division
General Manager of Intellectual Property Department.,
General Manager of R&D Department

Koichiro Kojima

Head of Ball Bearing Business Unit at Machined Component Manufacturing Headquarters

Michiya Kagami

Head of Development Div. at Electronic Device & Component Manufacturing Headquarters

Michihiro Tame

Deputy Officer in charge of Procurement & Logistics Div., Deputy Officer in charge of Administration, Planning & Accounting Div.

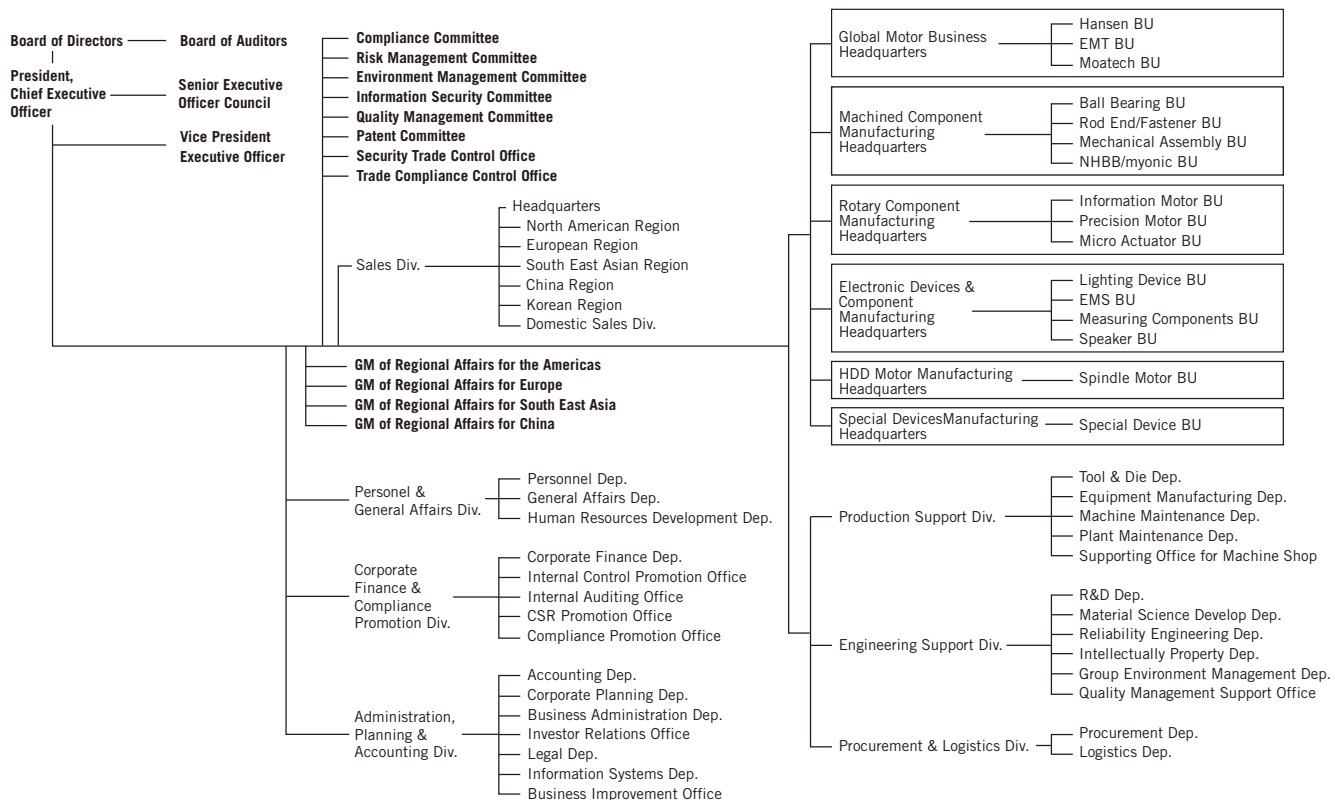
Atsushi Shiraiishi

Deputy Head of NHBB/myonic Business Unit at Machined Component Manufacturing Headquarters

Note: Messrs. Kohshi Murakami and Takashi Matsuoka are independent directors as required under Article 2, Paragraph 15, of the Company Law. Messrs. Kazuaki Tanahashi, Hiroataka Fujiwara and Hisayoshi Rikuna are external Auditors as required under Article 2, Paragraph 16, of the Company Law.

(As of July 1, 2012)

Organization



(As of May 21, 2012)