

Minebea Co., Ltd.

Corporate Information (As of June 2011)

Tokyo Head Office ARCO Tower, 19th Floor, 1-8-1, Shimo-Meguro, Meguro-ku, Tokyo 153-8662, Japan Tel: 81-3-5434-8611 Fax: 81-3-5434-8601 URL: http://www.minebea.co.jp/english/index.html	Registered Headquarters 4106-73, Oaza Miyota, Miyota-machi, Kitasaku-gun, Nagano 389-0293, Japan Tel: 81-267-32-2200 Fax: 81-267-31-1350	Established July 16, 1951	Independent Auditors KPMG AZSA LLC
---	--	-------------------------------------	--

Investor Information (As of March 31, 2011)

Common Stock

Authorized: 1,000,000,000 shares
 Issued: 399,167,695 shares
 Capital: ¥68,259 million
 Shares per unit: 1,000

Common Stock Listings

Tokyo, Osaka and Nagoya

American Depositary Receipts

Ratio (ADR : ORD): 1 : 2
 Exchange: Over-the-Counter (OTC)
 Symbol: MNBEY
 CUSIP: 602725301
 Depository: The Bank of New York Mellon
 101 Barclay Street, 22nd floor,
 New York, NY 10286, U.S.A.
 Tel: 1-201-680-6825
 U.S. toll-free: 888-269-2377
 (888-BNY-ADRS)
 URL: <http://www.adrbnymellon.com/>

Agent to Manage Shareholders' Registry

The Sumitomo Trust and Banking Co., Ltd.
 Tel: 81-120-176-417

Major Shareholders

Classification by Ownership of Shares

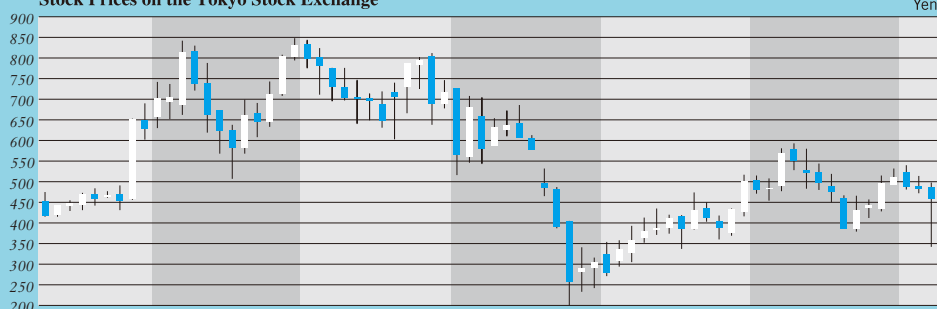
	Number of shareholders	Percentage of shareholders	Number of shares held (Thousand shares)	Percentage of shares outstanding (%)
Japanese financial institutions	130	0.6	201,797	50.6
Overseas institutions	360	1.8	96,356	24.1
Other Japanese corporations	271	1.3	33,614	8.4
Individuals and others	17,922	86.8	66,735	16.7
Subtotal	18,683	90.5	398,502	99.8
Others	1,961	9.5	665	0.2
Total	20,644	100.0	399,167	100.0

Top Ten Major Shareholders

	Number of shares (Shares)	Shareholding ratio (%)
Japan Trustee Services Bank, Ltd. (Trust Account)	30,356,000	7.91
The Master Trust Bank of Japan, Ltd. (Trust Account)	28,793,000	7.50
Japan Trustee Services Bank, Ltd. (Trust Account 9)	18,664,000	4.86
Japan Trustee Services Bank, Ltd. (Trust Account 4)	16,599,000	4.32
The Sumitomo Trust & Banking Co., Ltd.	15,349,000	4.00
Keiaisha Co., Ltd.	15,000,000	3.91
Takahashi Industrial and Economic Research Foundation	12,347,330	3.22
The Bank of Tokyo-Mitsubishi UFJ, Ltd.	10,057,839	2.62
Sumitomo Mitsui Banking Corporation	10,000,475	2.60
Trust & Custody Services Bank, Ltd. (Securities Investment Trust Account)	5,603,000	1.46

Notes: 1. The Company holds 15,240,203 shares of treasury stock, which are excluded from the major shareholders.
 2. Shareholding ratio is calculated exclusive of treasury stock.

Stock Prices on the Tokyo Stock Exchange



Average Daily Volume of Stock Traded, by Month



For further information please contact:

Investor Relations Office,
 Operation & Planning Div.
 Minebea Co., Ltd.
 Tel: 81-3-5434-8643
 Fax: 81-3-5434-8603