

Minebea Co., Ltd.

Corporate Information (As of June 2010)

Tokyo Head Office ARCO Tower, 19th Floor, 1-8-1, Shimo-Meguro, Meguro-ku, Tokyo 153-8662, Japan Tel: 81-3-5434-8611 Fax: 81-3-5434-8601 URL: http://www.minebea.co.jp/english/index.html	Registered Headquarters 4106-73, Oaza Miyota, Miyota-machi, Kitasaku-gun, Nagano 389-0293, Japan Tel: 81-267-32-2200 Fax: 81-267-31-1350	Established July 16, 1951	Independent Auditors KPMG AZSA & Co.
---	--	-------------------------------------	--

Investor Information (As of March 31, 2010)

Common Stock

Authorized: 1,000,000,000 shares
 Issued: 399,167,695 shares
 Capital: ¥68,259 million
 Shares per unit: 1,000

Common Stock Listings

Tokyo, Osaka and Nagoya

American Depositary Receipts

Ratio (ADR : ORD): 1 : 2

Exchange: Over-the-Counter (OTC)

Symbol: MNBEY

CUSIP: 602725301

Depository: The Bank of New York Mellon

101 Barclay Street, 22nd floor,

New York, NY 10286, U.S.A.

Tel: 1-201-680-6825

U.S. toll-free: 888-269-2377

(888-BNY-ADRS)

URL: <http://www.adrbnymellon.com/>

Agent to Manage Shareholders' Registry

The Sumitomo Trust and Banking Co., Ltd.

Tel: 81-120-176-417

Major Shareholders

Classification by Ownership of Shares

	Number of shareholders	Percentage of shareholders	Number of shares held (Thousand shares)	Percentage of shares outstanding (%)
Japanese financial institutions	116	0.6%	194,021	48.6
Overseas institutions	385	1.9	107,833	27.0
Other Japanese corporations	263	1.3	33,614	8.4
Individuals and others	17,469	85.7	62,978	15.8
Subtotal	18,233	89.5	398,446	99.8
Others	2,141	10.5	722	0.2
Total	20,374	100.0%	399,168	100.0

Top Ten Major Shareholders

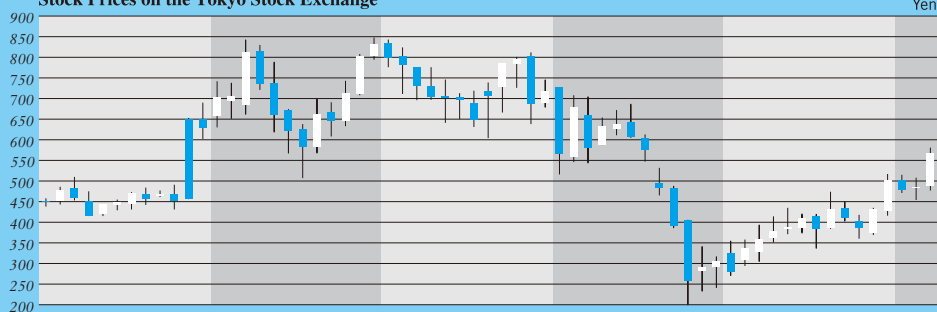
	Number of shares (Shares)	Shareholding ratio (%)
Japan Trustee Services Bank, Ltd. (Trust Account)	36,956,000	9.62
The Master Trust Bank of Japan, Ltd. (Trust Account)	25,315,000	6.59
Japan Trustee Services Bank, Ltd. (Trust Account 4)	16,469,000	4.29
Japan Trustee Services Bank, Ltd. (Trust Account 9)	15,501,000	4.04
The Sumitomo Trust & Banking Co., Ltd.	15,349,000	4.00
Keiaisha Co., Ltd.	15,000,000	3.91
Takahashi Industrial and Economic Research Foundation	12,347,330	3.22
The Bank of Tokyo-Mitsubishi UFJ, Ltd.	10,057,839	2.62
Sumitomo Mitsui Banking Corporation	10,000,475	2.60
The Dai-ichi Mutual Life Insurance Company, Limited	5,062,333	1.32

Notes: 1. The Company holds 15,194,412 shares of treasury stock, which are excluded from the major shareholders.

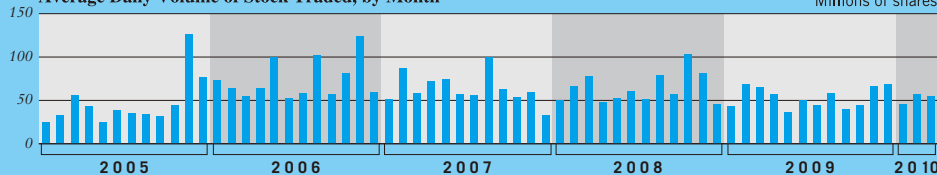
2. Shareholding ratio is calculated exclusive of treasury stock.

3. The Dai-ichi Mutual Life Insurance Company was reorganized from a mutual company to a stock company as of April 1, 2010 and was renamed as The Dai-ichi Life Insurance Company, Limited.

Stock Prices on the Tokyo Stock Exchange



Average Daily Volume of Stock Traded, by Month



High
 Opening
 Closing
 Low

High
 Closing
 Opening
 Low

Blue: opening price > closing price
 White: closing price > opening price

For further information please contact:

Investor Relations Office,
 Operation & Planning Div.
 Minebea Co., Ltd.
 Tel: 81-3-5434-8643
 Fax: 81-3-5434-8603