

Corporate Data

As of June 2007

Minebea Co., Ltd. Corporate Information

Tokyo Head Office

ARCO Tower, 19th Floor,
1-8-1, Shimo-Meguro,
Meguro-ku, Tokyo 153-8662, Japan
Tel: 81-3-5434-8611
Fax: 81-3-5434-8601
URL: <http://www.minebea.co.jp/english/index.html>

Registered Headquarters

4106-73, Oaza Miyota,
Miyota-machi, Kitasaku-gun,
Nagano 389-0293, Japan
Tel: 81-267-32-2200
Fax: 81-267-31-1330

Established

July 16, 1951

Investor Information

Common Stock (As of March 31, 2007)

Authorized: 1,000,000,000 shares
Issued: 399,167,695 shares
Capital: ¥68,258 million
Shares per unit: 1,000

Common Stock Listings

Tokyo, Osaka and Nagoya

American Depositary Receipts

Ratio (ADR : ORD): 1 : 2
Exchange: Over-the-Counter (OTC)
Symbol: MNBEY
CUSIP: 602725301
Depository: The Bank of New York
101 Barclay Street, 22nd floor,
New York, NY 10286,
U.S.A.
Tel: 1-212-815-2042
U.S. toll-free:
888-269-2377
(888-BNY-ADRS)
URL: <http://www.adrbny.com/>

Independent Certified Public Accountants

Shin Nihon & Co.

Agent to Manage Shareholders' Registry

The Sumitomo Trust and Banking
Co., Ltd.
Tel: 81-120-176-417

Independent Auditors

Ernst & Young ShinNihon

For further information please contact:

Investor Relations Office,
Administration Department,
Administration Division,
Minebea Co., Ltd.
Tel: 81-3-5434-8643
Fax: 81-3-5434-8603
E-mail: minebear@minebea.co.jp

Shareholders and Shares Issued (As of March 31, 2007)

Classification by Ownership of Shares

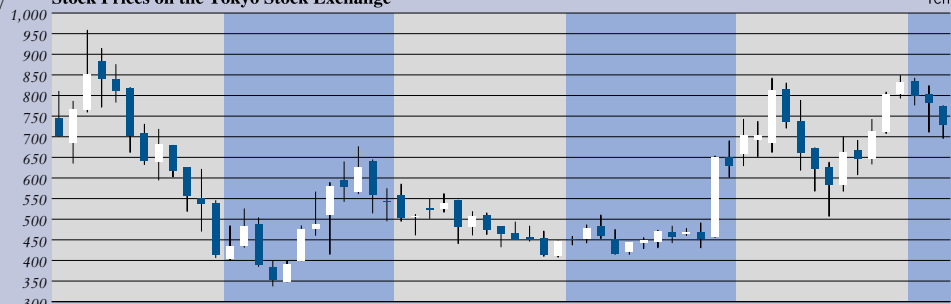
	Number of shareholders	Percentage of shareholders	Number of shares held	Percentage of shares outstanding
Japanese financial institutions	163	0.8%	196,256	49.3%
Overseas institutions	320	1.6	119,179	29.9
Other Japanese corporations	286	1.4	31,661	7.9
Individuals and others	19,396	96.2	51,263	12.9
Total	20,165	100.0%	398,359	100.0%

* In addition to the above shares, there are 808,695 odd-lot shares.

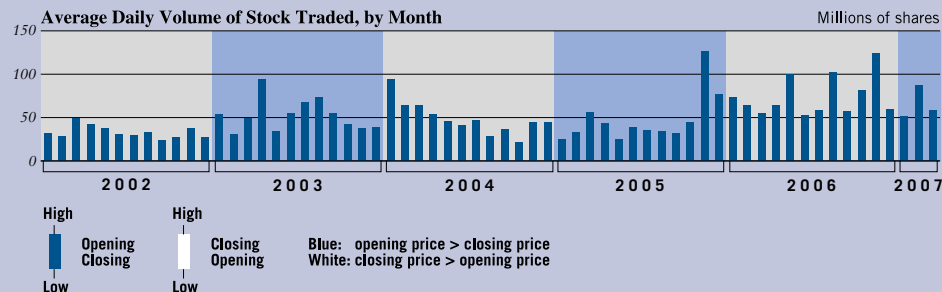
Top Ten Major Shareholders

	Number of shares held	Percentage of shares outstanding
The Master Trust Bank of Japan, Ltd. (Trust Account)	37,162,000	9.31%
Japan Trustee Services Bank, Ltd. (Trust Account)	35,747,000	8.96
Japan Trustee Services Bank, Ltd. (Trust Account 4)	20,836,000	5.22
Keiaisha Co., Ltd.	15,000,000	3.76
The Sumitomo Trust & Banking Co., Ltd.	12,349,000	3.09
Takahashi Industrial and Economic Research Foundation	12,347,330	3.09
The Bank of Tokyo-Mitsubishi UFJ, Ltd.	10,057,839	2.52
Sumitomo Mitsui Banking Corporation	10,000,475	2.51
State Street Bank and Trust Company	6,772,380	1.70
State Street Bank and Trust Company 505019	5,688,000	1.42

Stock Prices on the Tokyo Stock Exchange



Average Daily Volume of Stock Traded, by Month



High
Low
Opening
Closing
Blue: opening price > closing price
White: closing price > opening price