

## Corporate Data

As of June 2006

### Minebea Co., Ltd. Corporate Information

#### Tokyo Head Office

ARCO Tower, 19th Floor,  
1-8-1, Shimo-Meguro,  
Meguro-ku, Tokyo 153-8662, Japan  
Tel: 81-3-5434-8611  
Fax: 81-3-5434-8601  
URL: <http://www.minebea.co.jp/english/index.html>

#### Registered Headquarters

4106-73, Oaza Miyota,  
Miyota-machi, Kitasaku-gun,  
Nagano 389-0293, Japan  
Tel: 81-267-32-2200  
Fax: 81-267-31-1330

#### Established

July 16, 1951

### Investor Information

#### Common Stock (As of March 31, 2006)

Authorized: 1,000,000,000 shares  
Issued: 399,167,695 shares  
Capital: ¥68,258 million  
Shares per unit: 1,000

#### Common Stock Listings

Tokyo, Osaka, Nagoya and Singapore

#### American Depositary Receipts

Ratio (ADR : ORD): 1 : 2  
Exchange: Over-the-Counter (OTC)  
Symbol: MNBEY  
CUSIP: 602725301  
Depository: The Bank of New York  
101 Barclay Street,  
New York, NY 10286,  
U.S.A.  
Tel: 1-212-815-8161  
U.S. toll-free:  
888-269-2377  
(888-BNY-ADRS)  
URL: <http://www.adrbny.com/>

#### Independent Certified Public Accountants

Shin Nihon & Co.

#### Agent to Manage Shareholders' Registry

The Sumitomo Trust and Banking  
Co., Ltd.  
Tel: 81-120-176-417

#### Independent Auditors

Ernst & Young ShinNihon

#### For further information please contact:

Investor Relations Office,  
Corporate Planning Department,  
Corporate Planning Division,  
Corporate Headquarters,  
Minebea Co., Ltd.  
Tel: 81-3-5434-8643  
Fax: 81-3-5434-8603  
E-mail: [minebear@minebea.co.jp](mailto:minebear@minebea.co.jp)

### Shareholders and Shares Issued (As of March 31, 2006)

#### Classification by Ownership of Shares

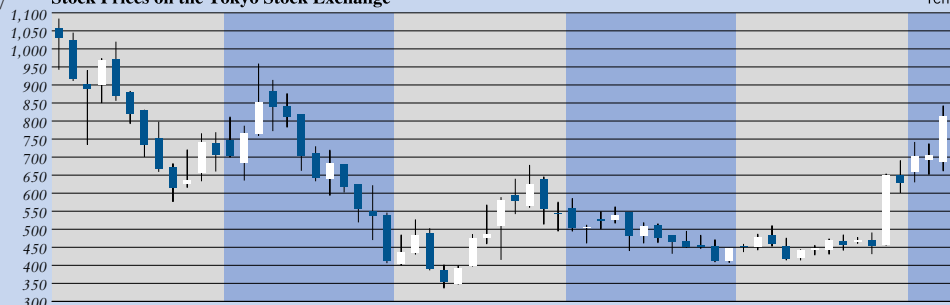
	Number of shareholders	Percentage of shareholders	Number of shares held	Percentage of shares outstanding
Japanese financial institutions	158	0.7%	195,427,000	49.1%
Overseas institutions	305	1.4	112,735,000	28.3
Other Japanese corporations	305	1.4	31,760,000	8.0
Individuals and others	21,825	96.6	58,407,000	14.7
<b>Total</b>	<b>22,593</b>	<b>100.0%</b>	<b>398,329,000</b>	<b>100.0%</b>

\* In addition to the above shares, there are 838,695 odd-lot shares.

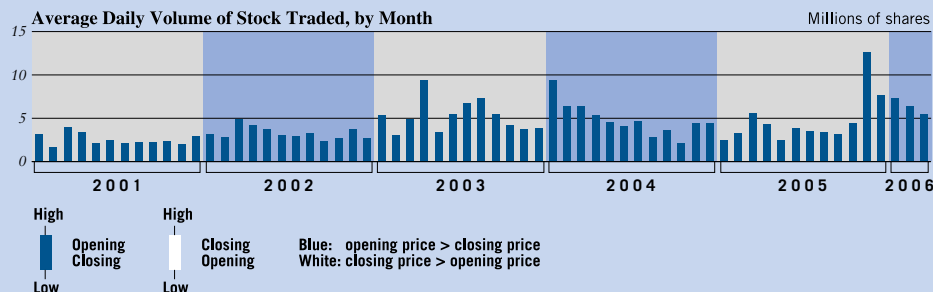
#### Top Ten Major Shareholders

	Number of shares held	Percentage of shares outstanding
The Master Trust Bank of Japan, Ltd. (Trust Account)	35,178,000	8.81%
Japan Trustee Services Bank, Ltd. (Trust Account)	34,236,000	8.58
Japan Trustee Services Bank, Ltd. (Trust Account 4)	18,756,000	4.70
Keiaisha Co., Ltd.	15,000,000	3.76
The Sumitomo Trust & Banking Co., Ltd.	12,349,000	3.09
Takahashi Industrial and Economic Research Foundation	12,347,330	3.09
The Bank of Tokyo-Mitsubishi UFJ, Ltd.	10,057,839	2.52
Sumitomo Mitsui Banking Corporation	10,000,475	2.51
Depository Nominees Inc.	8,194,322	2.05
State Street Bank and Trust Company 505019	7,331,972	1.84

Stock Prices on the Tokyo Stock Exchange



Average Daily Volume of Stock Traded, by Month



High  
Low  
Opening  
Closing  
High  
Low  
Closing  
Opening  
Blue: opening price > closing price  
White: closing price > opening price