

## Corporate Data

As of June 2005

### Minebea Co., Ltd. Corporate Information

#### Tokyo Head Office

ARCO Tower, 19th Floor,  
1-8-1, Shimo-Meguro,  
Meguro-ku, Tokyo 153-8662, Japan  
Tel: 81-3-5434-8611  
Fax: 81-3-5434-8601  
URL: <http://www.minebea.co.jp/>

#### Registered Headquarters

4106-73, Oaza Miyota,  
Miyota-machi, Kitasaku-gun,  
Nagano 389-0293, Japan  
Tel: 81-267-32-2200  
Fax: 81-267-31-1330

#### Established

July 16, 1951

### Investor Information

#### Common Stock (As of March 31, 2005)

Authorized: 1,000,000,000 shares  
Issued: 399,167,695 shares  
Capital: ¥68,258 million  
Shares per unit: 1,000

#### Common Stock Listings

Tokyo, Osaka, Nagoya and Singapore

#### American Depositary Receipts

Ratio (ADR : ORD): 1 : 2  
Exchange: Over-the-Counter (OTC)  
Symbol: MNBXY  
CUSIP: 602725301  
Depository: The Bank of New York  
101 Barclay Street,  
New York, NY 10286,  
U.S.A.  
Tel: 1-212-815-8161  
U.S. toll-free:  
888-269-2377  
(888-BNY-ADRS)  
URL: <http://www.adrbny.com/>

#### Independent Certified Public Accountants

Shin Nihon & Co.

#### Transfer Agent

The Sumitomo Trust and Banking  
Co., Ltd.  
Tel: 81-120-176-417

#### Independent Auditors

Ernst & Young ShinNihon

#### For further information please contact:

Investor Relations Office,  
Corporate Planning Department,  
Corporate Planning Division,  
Corporate Headquarters,  
Minebea Co., Ltd.  
Tel: 81-3-5434-8643  
Fax: 81-3-5434-8603  
E-mail: [minebear@minebea.co.jp](mailto:minebear@minebea.co.jp)

### Shareholders and Shares Issued (As of March 31, 2005)

Number of Shares Issued and Outstanding: 399,167,695

Number of Shareholders: 28,435

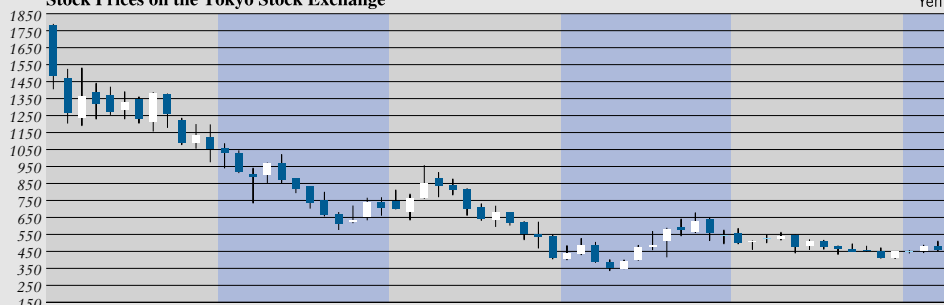
#### Classification by Ownership Shares

	Number of shares held	Percentage of shares outstanding	Number of shareholders	Percentage of shareholders
Japanese financial institutions	132,384,000	39.93%	163	0.57%
Overseas institutions	132,689,000	33.24	313	1.10
Individuals and others	71,944,000	18.02	27,657	1.38
Other Japanese corporations	35,152,000	8.81	392	96.95
	399,168,000	100.00%	28,435	100.00%

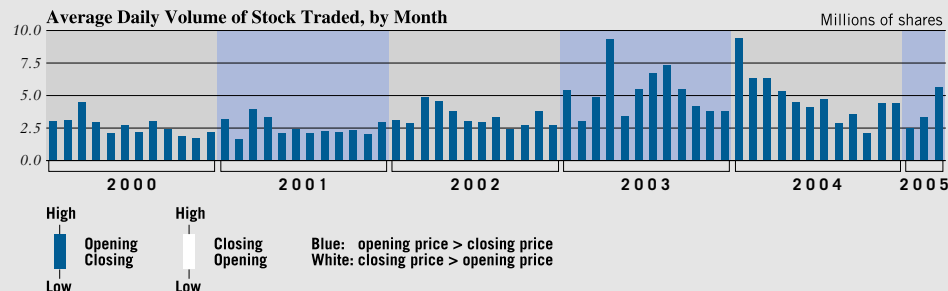
#### Top Ten Major Shareholders

	Number of shares held	Percentage of shares outstanding
Depository Nominees Inc.	28,987,322	7.26%
Japan Trustee Services Bank, Ltd. (Trust Account)	27,069,000	6.78
Keiaisha Co., Ltd.	18,000,000	4.51
The Master Trust Bank of Japan, Ltd. (Trust Account)	17,032,000	4.27
Shinsei Bank, Ltd.	12,501,000	3.13
The Sumitomo Trust & Banking Co., Ltd.	12,349,000	3.09
Takahashi Industrial and Economic Research Foundation	12,347,330	3.09
Mellon Bank, N.A. as Agent for Its Client Mellon Omnibus US Pension	10,474,988	2.62
Sumitomo Mitsui Banking Corporation Trust & Custody Services Bank, Ltd. (Pension Trust Account)	10,000,475	2.51
	6,852,000	1.72

Stock Prices on the Tokyo Stock Exchange



Average Daily Volume of Stock Traded, by Month



High  
Low  
High  
Low  
Blue: opening price > closing price  
White: closing price > opening price