

Corporate Data

Minebea Co., Ltd.

Corporate Information (As of June 2013)

Tokyo Head Office	Registered Headquarters	Established	Independent Auditors
3-9-6, Mita, Minato-ku, Tokyo 108-8330, Japan Tel: 81-3-6758-6711 Fax: 81-3-6758-6700 URL: http://www.minebea.co.jp/english/index.html	4106-73, Oaza Miyota, Miyota-machi, Kitasaku-gun, Nagano 389-0293, Japan Tel: 81-267-32-2200 Fax: 81-267-31-1350	July 16, 1951	KPMG AZSA LLC

Investor Information (As of March 31, 2013)

Common Stock

Authorized: 1,000,000,000 shares
 Issued: 399,167,695 shares
 Capital: ¥68,259 million
 Shares per unit: 1,000

Common Stock Listings

Tokyo, Osaka and Nagoya

American Depositary Receipts

Ratio (ADR : ORD): 1 : 2
 Exchange: Over-the-Counter (OTC)
 Symbol: MNBEY
 CUSIP: 602725301

Depository: The Bank of New York Mellon
 101 Barclay Street, 22nd floor,
 New York, NY 10286, U.S.A.
 Tel: 1-201-680-6825
 U.S. toll-free: 888-269-2377
 (888-BNY-ADRS)
 URL: <http://www.adrbnymellon.com/>

Agent to Manage Shareholders' Registry

Sumitomo Mitsui Trust Bank, Limited
 Tel: 81-120-176-417
<http://www.smtb.jp/personal/agency/index.html>

Major Shareholders

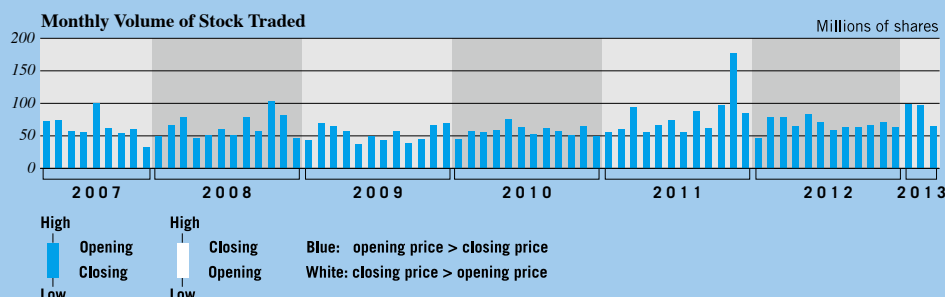
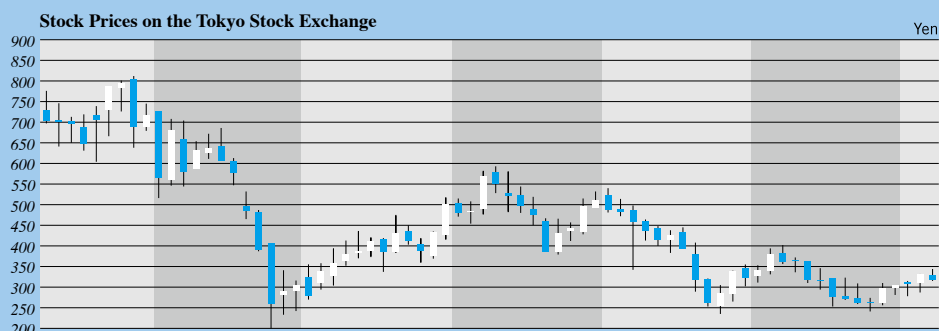
Classification by Ownership of Shares

	Number of shareholders	Percentage of shareholders	Number of shares held (Thousand shares)	Percentage of shares outstanding (%)
Japanese financial institutions	126	0.5	206,899	51.8
Overseas institutions	246	1.0	62,911	15.8
Other Japanese corporations	276	1.2	37,660	9.4
Individuals and others	21,106	88.8	91,070	22.8
Subtotal	21,754	91.5	398,540	99.8
Others	2,017	8.5	627	0.2
Total	23,771	100.0	399,167	100.0

Top Ten Major Shareholders

	Number of shares (Shares)	Shareholding ratio (%)
Japan Trustee Services Bank, Ltd. (Trust Account)	27,079,000	7.15
The Master Trust Bank of Japan, Ltd. (Trust Account)	25,495,000	6.73
Japan Trustee Services Bank, Ltd. (Trust Account 9)	16,338,000	4.31
National Mutual Insurance Federation of Agricultural Cooperatives	15,761,000	4.16
Takahashi Industrial and Economic Research Foundation	15,447,330	4.08
Sumitomo Mitsui Trust Bank, Limited	15,349,000	4.05
Keiaisha Co., Ltd.	15,000,000	3.96
Japan Trustee Services Bank, Ltd. (Trust Account 4)	13,531,000	3.57
The Bank of Tokyo-Mitsubishi UFJ, Ltd.	10,057,839	2.65
Sumitomo Mitsui Banking Corporation	10,000,475	2.64

Notes: 1. The Company holds 20,248,627 shares of treasury stock, which are excluded from the major shareholders.
 2. Shareholding ratio is calculated exclusive of treasury stock.



For further information please contact:

Investor Relations Office,
 Operation & Planning Div.
 Minebea Co., Ltd.
 Tel: 81-3-6758-6720
 Fax: 81-3-6758-6710