

Corporate Data

Minebea Co., Ltd.

Corporate Information (As of June 2009)

Tokyo Head Office ARCO Tower, 19th Floor, 1-8-1, Shimo-Meguro, Meguro-ku, Tokyo 153-8662, Japan Tel: 81-3-5434-8611 Fax: 81-3-5434-8601 URL: http://www.minebea.co.jp/english/index.html	Registered Headquarters 4106-73, Oaza Miyota, Miyota-machi, Kitasaku-gun, Nagano 389-0293, Japan Tel: 81-267-32-2200 Fax: 81-267-31-1350	Established July 16, 1951	Independent Auditors KPMG AZSA & Co.
---	--	-------------------------------------	--

Investor Information (As of March 31, 2009)

Common Stock

Authorized: 1,000,000,000 shares
 Issued: 399,167,695 shares
 Capital: ¥68,259 million
 Shares per unit: 1,000

Common Stock Listings

Tokyo, Osaka and Nagoya

American Depositary Receipts

Ratio (ADR : ORD): 1 : 2

Exchange: Over-the-Counter (OTC)

Symbol: MNBEY

CUSIP: 602725301

Depository: The Bank of New York Mellon

101 Barclay Street, 22nd floor,

New York, NY 10286, U.S.A.

Tel: 1-201-680-6825

U.S. toll-free: 888-269-2377

(888-BNY-ADRS)

URL: <http://www.adrbnymellon.com/>

Agent to manage Shareholders' Registry

The Sumitomo Trust and Banking

Co., Ltd.

Tel: 81-120-176-417

Major Shareholders

Classification by Ownership of Shares

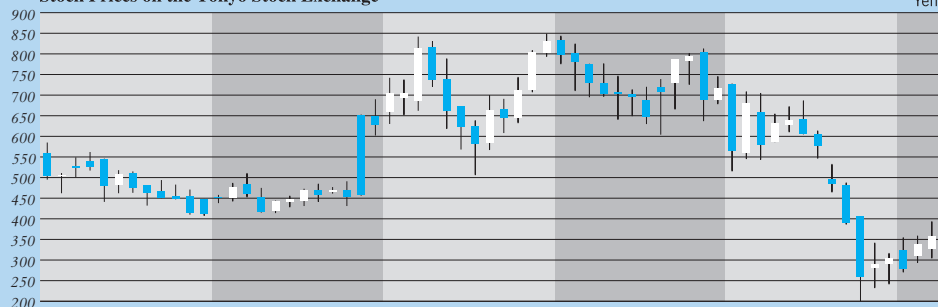
	Number of shareholders	Percentage of shareholders	Number of shares held (Thousand shares)	Percentage of shares outstanding
Japanese financial institutions	127	0.6%	205,271	51.5%
Overseas institutions	341	1.7	95,625	24.0
Other Japanese corporations	273	1.4	33,863	8.5
Individuals and others	19,234	96.3	63,688	16.0
Total	19,975	100.0%	398,447	100.0%

Top Ten Major Shareholders

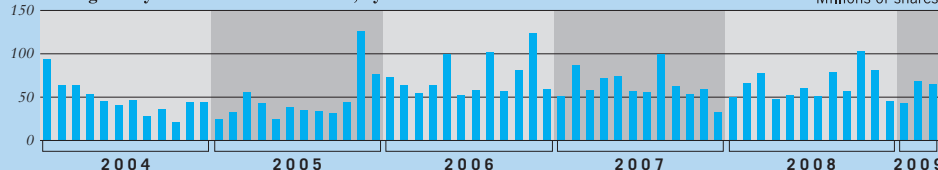
	Number of shares held (Shares)	Percentage of shares outstanding
Japan Trustee Services Bank, Ltd. (Trust Account)	37,645,000	9.43%
Japan Trustee Services Bank, Ltd. (Trust Account 4G)	25,971,000	6.51
The Master Trust Bank of Japan, Ltd. (Trust Account)	25,636,000	6.42
Japan Trustee Services Bank, Ltd. (Trust Account 4)	20,010,000	5.01
The Sumitomo Trust & Banking Co., Ltd.	15,349,000	3.85
Keiaisha Co., Ltd.	15,000,000	3.76
Takahashi Industrial and Economic Research Foundation	12,347,330	3.09
The Bank of Tokyo-Mitsubishi UFJ, Ltd.	10,057,839	2.52
Sumitomo Mitsui Banking Corporation	10,000,475	2.51
Nikko City Trust and Banking Corporation (Trust Account)	5,501,000	1.38

*The Company holds 10,183,931 shares of treasury stock, which are excluded from the above list.

Stock Prices on the Tokyo Stock Exchange



Average Daily Volume of Stock Traded, by Month



High Closing Low Opening
 High Opening Low Closing
 Blue: opening price > closing price
 White: closing price > opening price

For further information please contact:

Investor Relations Office,
 Operation & Planning Div.
 Minebea Co., Ltd.
 Tel: 81-3-5434-8643
 Fax: 81-3-5434-8607