

CORPORATE DATA

As of June 2002

Minebea Co., Ltd. Corporate Information

Tokyo Head Office

ARCO Tower, 19th Floor,
1-8-1, Shimo-Meguro,
Meguro-ku, Tokyo 153-8662, Japan
Tel: 81-3-5434-8611
Fax: 81-3-5434-8601
<http://www.minebea.co.jp/>

Registered Headquarters

4106-73, Oaza Miyota,
Miyota-machi, Kitasaku-gun,
Nagano 389-0206, Japan
Tel: 81-2-6732-2200
Fax: 81-2-6731-1330

Established

July 16, 1951

Investor Information

Common Stock (As of March 31, 2002)

Authorized: 1,000,000,000 shares
Issued: 399,167,695 shares
Capital: ¥68,259 million

Common Stock Listings

Tokyo, Osaka and Nagoya

American Depositary Receipts

Ratio (ADR: ORD): 1: 2
Exchange: Over-the-Counter (OTC)
Symbol: MNBEY
CUSIP: 602725301
Depository: The Bank of New York
101 Barclay Street,
New York, NY 10286, U.S.A.
Tel: 1-212-815-2204
U.S. toll-free: 888-269-2377
(888-BNY-ADRS)
<http://www.bankofny.com/adr/>

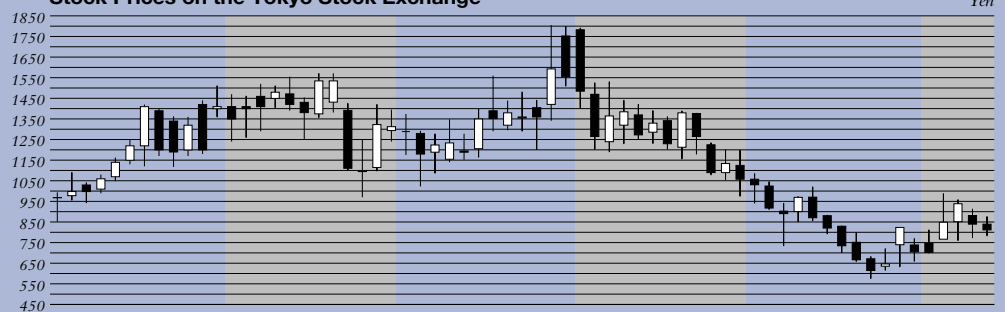
Independent Certified Public Accountants

Shin Nihon & Co.

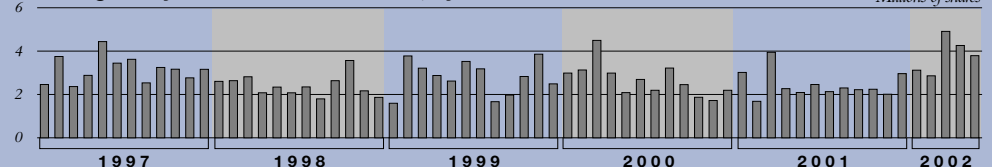
Transfer Agent

The Sumitomo Trust and Banking Co., Ltd.

Stock Prices on the Tokyo Stock Exchange



Average Daily Volume of Stock Traded, by Month



For further information
please contact:

Minebea Co., Ltd.
Strategy Planning Department
Investor Relations Office
Tel: 81-3-5434-8643
Fax: 81-3-5434-8603
E-mail: minebeair@minebea.co.jp

High
Opening Closing
Low

High
Closing Opening
Low

Black: opening price > closing price
White: closing price > opening price